



SKABS & LEVERS 20483

9-PIECE KIT • PRE-GLUED PATCHES

NEW
Tire lever
design



- **EASY TUBE REPAIRS**
- **STRONG BIKE LEVERS**
- **FAST PEEL & STICK PATCHES**

AVAILABLE FEB 2020

Skabs & Levers			
PART# 20483		REV102919ART / REV A**	
	EA.	DIMENSIONS	UPC/CASE CODE
UNIT	1	1.018" H x 3.5" W x 6" D • 0.09 LBS	716281510304
INNER	12	4.125" H x 10.313" W x 4.125" L • 1.418 LBS	10716281510301
MASTER	288	17.25" H x 13.688" W x 31.5" L • 35.983 LBS	20716281510308

ITW Global Tire Repair • 125 Venture Drive, Suite 210, San Luis Obispo, CA 93401 • PHONE: 805.489.0490 • FAX: 805.489.1920
 ITW Global Tire Repair, GmbH • Carl-Benz Str. 10, 88696, Owingen, Germany • PHONE: +49-7551-9200-0 • FAX: +49-7551-9200-990



SKABS & LEVERS 20483 SPEC SHEET

PART# 20483

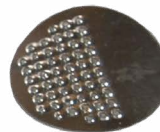
KIT CONTAINS:

- Two (2) Tire Levers 4.45in. x 0.91in. (113mm x 23mm)
- One (1) Metal Scuffer 1.13in. x 1.13in. (28.7mm x 28.7mm)
- Twenty (20) 1" Skabs 1in. x 1in. (25.4mm x 25.4mm)
- Instruction insert

TIRE LEVERS



1" SKABS



METAL SCUFFER

LINKS

[PRODUCT WEB PAGE](#)

[SDS SHEET \(N/A\)](#)

[HI RES IN & OUT OF PACKAGE SHOTS,
6-SIDED PHOTOS, INSTRUCTIONS & UPC](#)

[VIDEOS \(N/A\)](#)

[PRODUCT WARRANTY](#)

PART# 20483



ADDITIONAL SET UP INFO

HTS CODE: 3919.90.5060

COUNTRY OF ORIGIN: CHINA

PALLET INFORMATION:

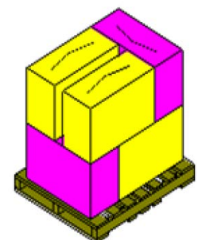
CASES PER LAYER (TIE): 3

LAYERS PER LOAD (HIGH): 2

MASTER CASES/PALLET: 6

INNER CASES/PALLET: 144

EACHES PER PALLET: 1728



*ART REVISION CHANGES:
REV102619 • Initial Release.

**REVISION CHANGES:
REV A • Initial Release.

ITW Global Tire Repair • 125 Venture Drive, Suite 210, San Luis Obispo, CA 93401 • PHONE: 805.489.0490 • FAX: 805.489.1920
ITW Global Tire Repair, GmbH • Carl-Benz Str. 10, 88696, Owingen, Germany • PHONE: +49-7551-9200-0 • FAX: +49-7551-9200-990